


**特点 Features:**

- 高触点容量: 16A触点切换能力.  
High contact switching capability: 16A.
- 高灵敏度: 200mw.  
High Sensitivity type: 200mw
- 低高度: 10.5mm.  
Low height: 10.5mm.

**触点参数 CONTACT DATA**

型号	Model	YX206F
触点形式	Contact Arrangement	1A
接触电阻	Contact Resistance	100mΩ Max.
触点材料	Contact Material	银合金 Silver Alloy
额定负载(阻性)	Contact Rating ( Res.Load )	16A 250VAC/30VDC
最大切换电流	Max. Switching Current	16A
最大切换电压	Max. Switching Voltage	277VAC/30VDC
最大切换功率	Max. Switching Power	4000VA/480W
机械寿命	Mechanical endurance	1x10 <sup>7</sup> 次 OPS
电气寿命	Electrical endurance	1x10 <sup>5</sup> 次 OPS

**性能参数 CHARACTERISTICS**

吸合时间(额定电压下)	Operate Time ( at nomi.volt. )	15ms Max.
释放时间(不带二极管)	Release Time ( without diode )	8ms Max.
绝缘电阻	Insulation Resistance	1000MΩ Min.( 500VDC )
介质耐压	Dielectric Strength	触点与触点间 Between Open Contacts : 1,000VAC, 50/60Hz 1 min.
		触点与线圈间 Between Coil & Contacts: 2,500VAC, 50/60Hz 1 min.
抗振性	Vibration resistance	误动作 Functional: 10~55Hz 双振幅 1.5mm ( DA )
		耐久 Destructive: 10~55Hz 双振幅 1.5mm ( DA )
抗冲击	Shock resistance	误动作 Functional: 10G Min.
		耐久 Destructive: 100G Min.
环境温度	Ambient Temperature	-40°C~+85°C (不冷凝 No condensation)
重量	Unit Weight	约 Approx. 8.8g

**线圈参数 COIL DATA (at 23°C)**

额定电压 Rated voltage (VDC)	额定电流 Rated current ±10%(mA)	线圈电阻 Coil resistance ±10%(Ω)	最大连续外加电压 Max allowable voltage VDC (Max.)	吸合电压 Operate voltage VDC (Max.)	释放电压 Release voltage VDC (Min.)	额定功率 Rated coil power (W)
3	67	45	额定电压的 of rated voltage 150 %	额定电压的 of rated voltage 75 %	额定电压的 of rated voltage 5 %	约 approx. 0.2
5	40.0	125				
6	33.3	180				
9	22.2	405				
12	16.7	720				
18	11.1	1620				
24	8.3	2,880				
48	7.1	6,770				约 approx. 0.34

## 订货标记示例 ORDERING INFORMATION

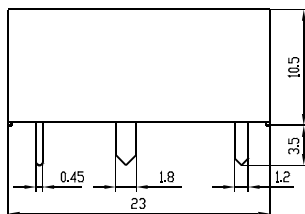
YX206F	-S	-1	12	D	M	
						触点形式 Contact form : M-常开 M-Form A
						线圈功耗 Coil power : D-0.2 W
						线圈规格 Coil voltage : 03,05,06,09,12,18,24,48 (VDC)
						触点组数 Number of poles : 1-1组 1-1 Group
						封装形式 Protective construction : S-塑封式 S-Flux proofed
						基本型号 Type designation : YX206F

## 外形尺寸、接线图、安装孔位图 (单位: mm)

## OUTLINE DIMENSIONS, WIRING DIAGRAM AND PCB LAYOUT (Unit: mm)

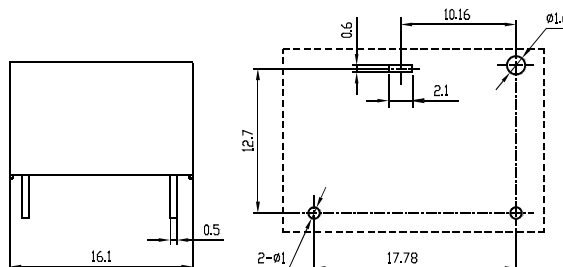
外形尺寸

Outline Dimensions



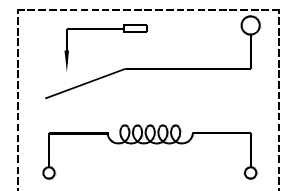
安装孔位图 (底视图)

PCB Layout ( Bottom View )



接线图 (底视图)

Wiring Diagram ( Bottom View )



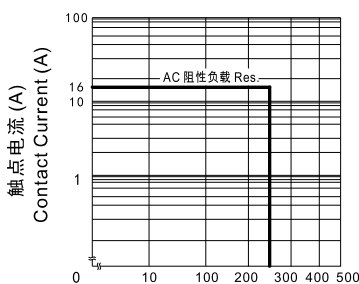
常开型  
1 Form A

注 Remark :

- 1.未标注尺寸公差 Unmarked dimensional tolerance  
 $\leq 1\text{mm}$ :  $\pm 0.2\text{mm}$  ;  $(1\sim 5)\text{mm}$ :  $\pm 0.3\text{mm}$  ;  $\geq 5\text{mm}$ :  $\pm 0.4\text{mm}$ .
- 2.安装孔尺寸公差:  $\pm 0.1\text{mm}$ .  
 The tolerance of PCB layout is always:  $\pm 0.1\text{mm}$ .
- 3.引出脚尺寸为预焊前尺寸.  
 Extended terminal dimension is dimension before soldering.

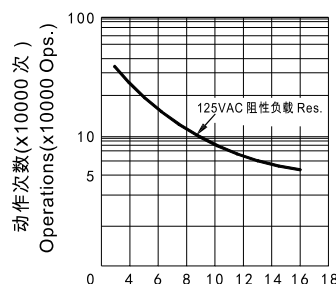
## 性能曲线图 CHARACTERISTIC CURVES

最大切换功率  
Max. Switching Power



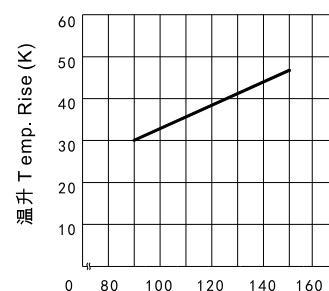
触点电压 (V)  
Contact Voltage (V)

寿命曲线  
Endurance Curve



触点电流 (A)  
Contact Current (A)

线圈温升  
Coil Temperature Rise



线圈额定电压百分比  
Percentage of Nominal Coil Voltage